

Packaging Specifications

Product size	Package size	Quantity per carton	Weight
85mm * 85mm * 52mm	100mm * 100mm * 70mm	1	105g/carton

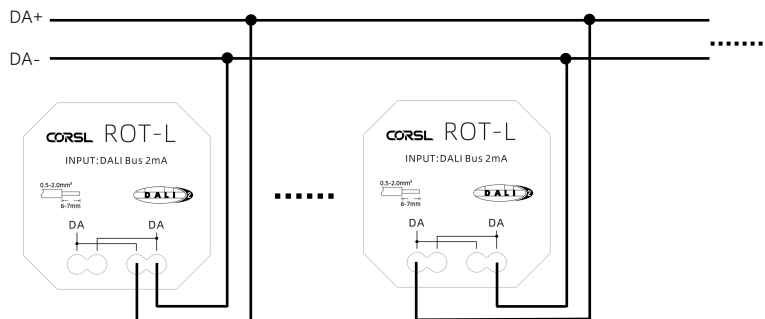
Operating Guide

- As a **Standard Input Device** - The device's factory default setting is 'input device' mode, it can be addressed and configuration by higher-level central control units (support IEC 62386-103) on the DALI BUS.
- As an **Application Controller** - With the help of DALI-Config software and DMUmini, address the device first and activate the device to 'application controller' mode, then configuration or location.
- Please refer to the user manual.

Product Features

- according to IEC62386-101, IEC62386-102, IEC62386-103, IEC62386-301, IEC62386-302 Ed2.
- compatible with the mainstream DALI systems on the market.
- screw connector
- directly connected and supplied by the DALI bus.
- installed in a flush-mounted installation box or on a cavity wall.
- waterproof Rating: IP20.

Wiring Diagram

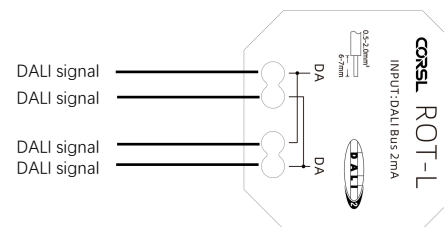


Function Introduction

- two ports are connected in parallel



- terminals

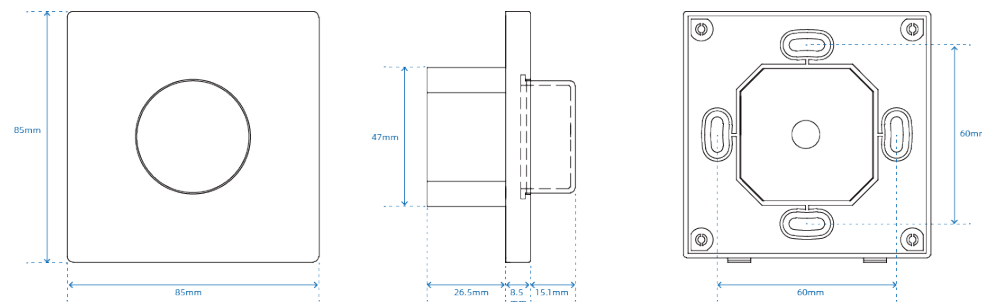


connection type	screw connector
wire size solid core	0,5 ... 2,0 mm ² (21 ... 14AWG)
wire size fine core	0,5 ... 2,0 mm ² (21 ... 14AWG)
wire size using wire end ferrule	0,3 ... 1.5 mm ²
stripping length	6 ~ 7mm

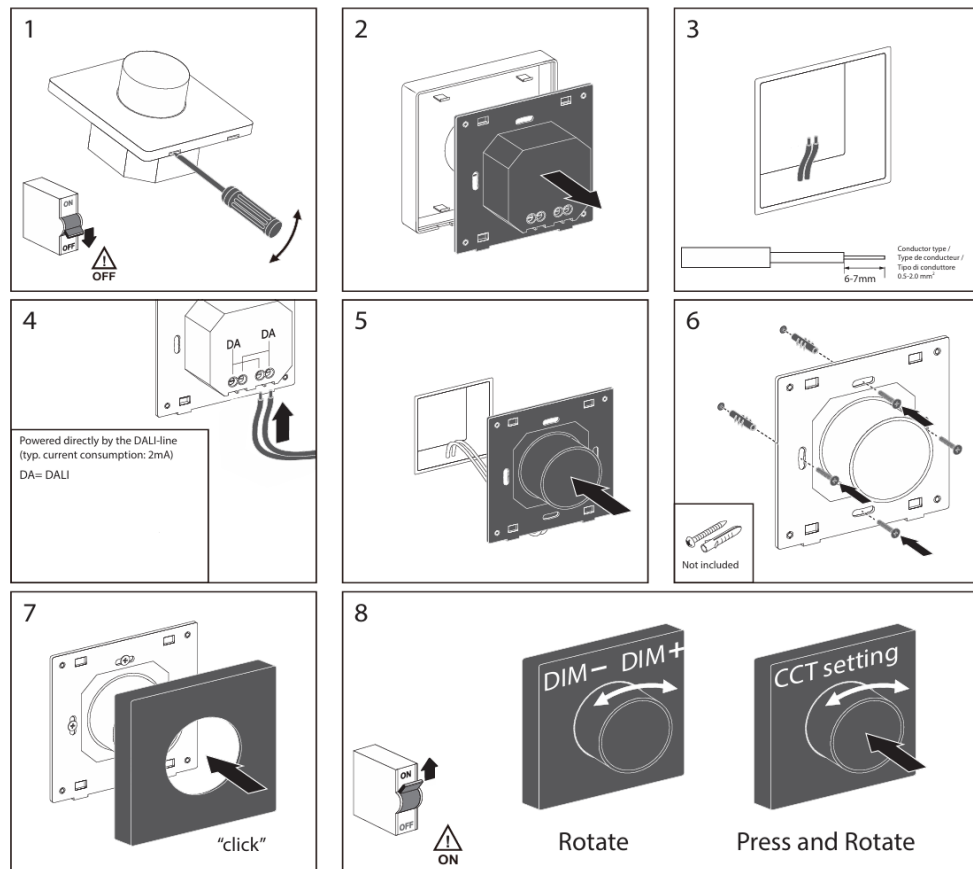
Product Parameters

input voltage range	9,5V ... 22,5Vdc according to IEC62386
typ. current consumption DALI (at 16.5V)	2mA
Max. current consumption DALI (Inrush current at 22.5 V)	8mA

Dimensions



Installation Diagram



Warnings ⚠

- Installation may only be carried out in a voltage-free state of the system and by personnel with professional qualifications.
- National regulations for setting up electrical systems must be followed.
- The wiring should be carried out as a permanent installation in a dry and clean environment.
- This product is not waterproof. Please do not expose it to a damp environment.
- Please disconnect the mains power supply before wiring.
- Make sure the wiring is firm.
- Before power-on debugging, it should be ensured that all wiring is correct.
- In case of malfunction, Please do not repair it privately. If you have any questions, please contact the supplier.

Five-year warranty

1. Purchasing LED controller products of CROSL entitles you to lifetime technical support and warranty service.

- Free warranty: Within five years from the date of purchase, CROSL will provide free repair or replacement services for any product quality issues.
- Paid warranty: For products beyond the free warranty period, an appropriate cost of repair materials will be charged.

2. The following situations are not covered by the free warranty or replacement service

- Damages caused by human factors such as excessive voltage, overloading, and improper operation.
- The product's appearance is severely damaged or deformed.
- Damage caused by natural disasters and force majeure.
- The product has been updated and replaced.